

Pride of Africa

Safaris

13 Day Scenic South Africa (JHB 01)

This tour is a modular South African trip that encompasses the best of Mpumalanga and Kwazulu Natal. A wildlife and culture orientated tour taking clients to the quieter parts of these sought after and popular destinations. Game drives and walks with rangers as well as a bit of cultural heritage make for a well balanced itinerary which keeps long driving days to a minimum.

- Johannesburg
- Dullstroom Bird of Prey Rehabilitation Centre, Moholoholo Wildlife Rehabilitation Centre
 - Hazy View and Blyde River Canyon, Blyde River boat cruise
 - Kruger National Park and the Big 5
 - Swaziland and St Lucia Wetlands
 - Umfolozi Game Reserve
 - Drakensberg Mountains

Day 1 and 2: Dullstroom and Moholoholo Wildlife Rehabilitation



We depart early morning from our B&B in Johannesburg at 07h00. Along the way we stop in Dullstroom at the Birds of Prey Rehabilitation Centre which includes eagles, falcons, owls and vultures. Lunch will be for your own expense further en route near Lydenburg. We drive over Longtom Pass then drop down into the lowveld towards our first stop in Hazyview.

Hazyview nestles along the Sabie river, during the 1950's, the Sabie River's strong currents and numerous crocodiles earned her the nickname "ULUSABA", meaning river of fear. Gold-diggers camping on her banks were often taken by crocodiles or drowned in her waters!

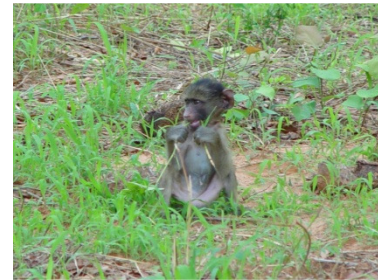
We overnight in Hazyview B&B.

Enjoy an early morning breakfast followed by a full day panoramic route tour starting with Moholoholo Wildlife Rehabilitation Centre, a haven for abandoned, injured or poisoned wildlife. Undertake a 2 hr tour of the centre

followed by a midday boat trip from Swadini on Blyde Poort Dam with specialist guide of the Fauna and Flora of the area. Our boat trip may be cancelled if VERY windy. Visit the famous Blyde River Canyon from one of South Africa's most famous viewpoints, before returning to Hazyview.

We overnight again in Hazyview B&B.

Day 3, 4 and 5: Kruger National Park



After a leisurely breakfast we transfer into a Landrover Game viewer vehicle and journey into the massive park. The Kruger National Park was formed in 1926, when Sabie Game Reserve, Shingwedzi Game Reserve and a number of neighbouring farms combined. It was officially open to the public in 1927. Relax around camp for lunch and during the heat of the day before we leave on a sunset game drive. Return to a traditional braai under the stars prepared by your guide. All game drives in open game viewer.

The morning of Day 4 we enjoy an early game walk with an armed SANP Ranger into Big 5 territory, and then return to camp for brunch prepared by your guide. There is another afternoon game drive in open game viewer.

On Day 5 we have a full day game drive in open game viewer.

We overnight in the Kruger National Park.

Day 6 - Swaziland



Exiting the Kruger we transfer back into tour vehicle near Hazyview and then it is onwards to the Kingdom of Swaziland where we overnight in en - suite Swazi huts. We will venture out on an afternoon walk at leisure before having dinner.

Swaziland is a small country, no more than 200 km north to south and 130 km east to west. The western half is mountainous, descending to a lowveld region to the east. The eastern border with Mozambique and South Africa is dominated by the escarpment of the Lebombo Mountains. The climate is temperate in the west, but

3 may reach 40 degrees in summer in the lowveld. Rainfall occurs mainly in the summer and may reach 2 m in the west. (Wikipedia)

Day 7 and 8 – St Lucia Wetlands and Beach



Leaving the Mountain Kingdom of the Swazi's we head into a different biome along the KwaZulu Natal coastal belt. Our log cabins overlooking the Indian Ocean are nestled at the base of the forest dunes right on the beach, where you can enjoy sunrises, walks on the beach, and just being close to nature. Located in the Greater St Lucia Wetland Park, there is allot wildlife on our doorstep including Hippo, Crocodile and over 200 bird species. Enjoy afternoon walk along the estuary bank.

Day 8 you will have a full day at leisure to relax on the beach or go for long walks along the unspoilt shoreline.

Day 9 and 10 – Umfolozi Game Reserve

We have a lazy departure inland to Shaka's old hunting ground. It is a short drive to Umfolozi Game Reserve, and after we have checked in we can enjoy a leisurely afternoon game drive. On Day 10 there is a morning game walk with armed ranger, then return to camp for brunch and midday time at leisure. Afternoon game drive in open game viewer in search of dangerous Black Rhino!

The Hluhluwe Umfolozi Park is the only park under formal conservation in Natal where the Big Five still walk, and was established in 1895. The park lies in the heart of Zululand and is the oldest game reserve in Africa, where Zulu kings such as Dingiswayo and Shaka hunted and put in place the first conservation laws. Africa's 'Big Five' (lion, elephant, leopard, buffalo and rhinoceros) stalk this flourishing savannah, and game viewing is the principal attraction in the Hluhluwe Umfolozi Game Reserve. Viewing hides overlook pans and waterholes enabling one to observe the wildlife at close range.

Day 11



We depart early for the Drakensburg Mountains after breakfast. Stop en route to see many superb views of the scenic Natal Midlands. Our lodge is located high up in the Northern Berg offering unsurpassed views.

The **Drakensberg** "the *Dragon Mountains*" are the highest mountain range in Southern Africa, rising to a startling 3,482 metres (11,424 ft) in height. In Zulu, it is referred to as **uKhahlamba** ("barrier of spears"), and in Sesotho as **Maluti** (spelled **Maloti**). Its geological history lends it a distinctive character amongst the mountain ranges of the world. The range is located in the eastern part of Southern Africa, running for some 1,000 kilometres (620 miles) from south-west to north-east. The mountains drain on the western slopes by the Orange and Vaal rivers, and on the east and south by a number of smaller rivers, the Tugela being the largest. Looming over the nearby coast of Natal the range covers the border between KwaZulu-Natal Province of South Africa and the Drakensberg mountain kingdom of Lesotho.

Day 12

Walk one of the spectacular day hikes this part of the Drakensburg has to offer. Hike to one of the caves in the area that have Bushmen paintings in them. We return to base for our last evening around warm fire, enjoying hot chocolate and a delicious dinner.

Day 13

We depart after a delicious breakfast for our return to Johannesburg. Tour ends mid afternoon. Drop off at O.R Tambo International airport.

Scheduled departures: 14.04.2010; 29.04.2010; 21.07.2010; 11.08.2010; 01.09.2010; 06.10.2010

General Information:

Spending money: Clients are advised to bring VISA cards, Euros or US Dollars (new type with large head, preferably not 100 Dollar notes) Most ATM machines accept VISA cards and will allow cash to be withdrawn at very favorable exchange rates.

Client involvement: This is a fixed accomodation tour - with minimal participation.

Climate conditions: Summer months start from mid September - mid April. Temperatures will vary bewtween 15 deg C and can reach as high as 45 deg C. Rain can be expected, especially over Dec - March which would consitute afternoon or evening thundershowers. Winter months are mid April - mid September. midday temperatures are mild with a 20 deg C average. Early mornings and nights can be as low as zero deg C so a warm sleeping bag is recommended for mid winter safaris.

Insurance: It is compulsory for all clients to be insured for personal accident, medical emergency, travel and rescue expenses, cancellation and curtailment prior to departure from their home country.

Health requirements: Malaria occurs in certain areas of Namibia and Botswana. It is recommended that you consult your physician as to the appropriate malaria prophylaxis. All water on safari is safe for drinking.

Travel documents: Ensure your passport is valid for at least six months after the end of the safari. The following people DO NOT need a Visa for Namibia and Botswana provided that you have a return airfare as proof: FRG, Switzerland, Liechtenstein, Ireland, UK, Austria, Italy, France, USA, Canada, Japan, Scandinavia, Zimbabwe, Tanzania, Angola, Zambia, Botswana, Mozambique, Netherlands, and South-Africa.

Items to bring with: Light and rugged items like denims/slacks, shorts, cool tops and comfortable hiking shoes as well as sandals (slops, flip-flops) for the warmer days. In winter warm sweaters or jackets are required. Sunburn protection, insect repellent, hat, sunglasses, binoculars, torch and toiletries.

For wildlife photography a minimum of a 200mm lens is recommended. Zoom lenses can be very useful. Also bring extra film and batteries. Your camera and batteries can be charged through an inverter which is fitted in our vehicles.